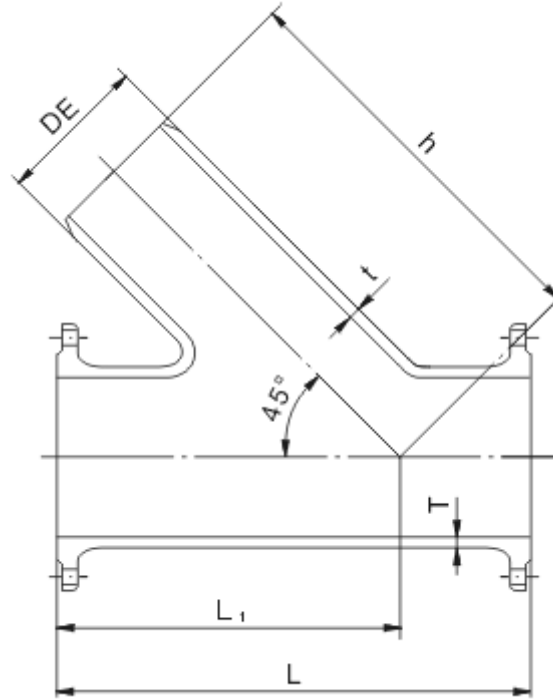




Spigot Angle Branch on Double Flanged



Unit : mm

DN		Thickness		Dimensions				Weight (Include flanged 7.5K) (kg)
D	d	T	t	DE	L	L ₁	h	
150	100	7.8	7.2	118.0	515	445	532	33.7
	150	7.8	7.8	169.0	585	480	568	41.5
200	100	8.4	7.2	118.0	534	490	577	44.0
	150	8.4	7.8	169.0	605	525	613	52.1
	200	8.4	8.4	220.0	676	560	665	63.2
250	150	9.0	7.8	169.0	624	570	658	67.4
	200	9.0	8.4	220.0	695	605	710	78.8
	250	9.0	9.0	271.6	767	640	754	93.2
300	150	9.6	7.8	118.0	653	605	693	79.8
	200	9.6	8.4	220.0	725	640	745	95.0
	250	9.6	9.0	271.6	801	680	794	110.0
350	200	10.2	8.4	220.0	744	680	785	116.3
	250	10.2	9.0	271.6	815	715	829	131.1
400	200	10.8	8.4	220.0	763	725	830	136.4
	250	10.8	9.0	271.6	830	755	869	151.3
450	200	11.4	8.4	220.0	788	770	875	166.0
	250	11.4	9.0	271.6	859	805	919	182.4
500	200	12.0	8.4	220.0	802	810	915	190.3
	250	12.0	9.0	271.6	865	835	949	206.1